

NATIONAL STANDARD METHOD

IDENTIFICATION OF ENTEROBACTERIACEAE

BSOP ID 16

Issued by Standards Unit, Evaluations and Standards Laboratory
Centre for Infections



Association of Medical Microbiologists
Association of Medical Microbiologists
Association of Medical Microbiologists



IDENTIFICATION OF ENTEROBACTERIACEAE

Issue no: 2 Issue date: 09.11.07 Issued by: Standards Unit, Evaluations and Standards Laboratory

Page 1 of 16

Reference no: BSOP ID16i2

This SOP should be used in conjunction with the series of other SOPs from the Health Protection Agency

www.evaluations-standards.org.uk

Email: standards@hpa.org.uk

STATUS OF NATIONAL STANDARD METHODS

National Standard Methods, which include standard operating procedures (SOPs), algorithms and guidance notes, promote high quality practices and help to assure the comparability of diagnostic information obtained in different laboratories. This in turn facilitates standardisation of surveillance underpinned by research, development and audit and promotes public health and patient confidence in their healthcare services. The methods are well referenced and represent a good minimum standard for clinical and public health microbiology. However, in using National Standard Methods, laboratories should take account of local requirements and may need to undertake additional investigations. The methods also provide a reference point for method development.

National Standard Methods are developed, reviewed and updated through an open and wide consultation process where the views of all participants are considered and the resulting documents reflect the majority agreement of contributors.

Representatives of several professional organisations, including those whose logos appear on the front cover, are members of the working groups which develop National Standard Methods. Inclusion of an organisation's logo on the front cover implies support for the objectives and process of preparing standard methods. The representatives participate in the development of the National Standard Methods but their views are not necessarily those of the entire organisation of which they are a member. The current list of participating organisations can be obtained by emailing standards@hpa.org.uk.

The performance of standard methods depends on the quality of reagents, equipment, commercial and in-house test procedures. Laboratories should ensure that these have been validated and shown to be fit for purpose. Internal and external quality assurance procedures should also be in place.

Whereas every care has been taken in the preparation of this publication, the Health Protection Agency or any supporting organisation cannot be responsible for the accuracy of any statement or representation made or the consequences arising from the use of or alteration to any information contained in it. These procedures are intended solely as a general resource for practising professionals in the field, operating in the UK, and specialist advice should be obtained where necessary. If you make any changes to this publication, it must be made clear where changes have been made to the original document. The Health Protection Agency (HPA) should at all times be acknowledged.

The HPA is an independent organisation dedicated to protecting people's health. It brings together the expertise formerly in a number of official organisations. More information about the HPA can be found at www.hpa.org.uk.

The HPA aims to be a fully Caldicott compliant organisation. It seeks to take every possible precaution to prevent unauthorised disclosure of patient details and to ensure that patient-related records are kept under secure conditions¹.

More details can be found on the website at www.evaluations-standards.org.uk. Contributions to the development of the documents can be made by contacting standards@hpa.org.uk.

Please note the references are now formatted using Reference Manager software. If you alter or delete text without Reference Manager installed on your computer, the references will not be updated automatically.

Suggested citation for this document:

Health Protection Agency (2007). *Identification of enterobacteriaceae*. National Standard Method BSOP ID 16 Issue 2. http://www.hpa-standardmethods.org.uk/pdf_sops.asp.

IDENTIFICATION OF ENTEROBACTERIACEAE

Issue no: 2 Issue date: 09.11.07 Issued by: Standards Unit, Evaluations and Standards Laboratory

Page 2 of 16

Reference no: BSOP ID16i2

This SOP should be used in conjunction with the series of other SOPs from the Health Protection Agency

www.evaluations-standards.org.uk

Email: standards@hpa.org.uk

INDEX

STATUS OF NATIONAL STANDARD METHODS.....	2
INDEX.....	3
AMENDMENT PROCEDURE	4
SCOPE OF DOCUMENT	5
INTRODUCTION.....	5
TECHNICAL INFORMATION	7
1 SAFETY CONSIDERATIONS	8
2 TARGET ORGANISMS	8
3 IDENTIFICATION.....	9
3.1 MICROSCOPIC APPEARANCE	9
3.2 PRIMARY ISOLATION MEDIA	9
3.3 COLONIAL APPEARANCE.....	9
3.4 TEST PROCEDURES	9
3.5 FURTHER IDENTIFICATION	10
3.6 STORAGE AND REFERRAL.....	10
4 IDENTIFICATION OF ENTEROBACTERIACEAE – FLOW CHART	11
5 REPORTING	12
5.1 PRESUMPTIVE IDENTIFICATION	12
5.2 CONFIRMATION OF IDENTIFICATION.....	12
5.3 MEDICAL MICROBIOLOGIST.....	12
5.4 CCDC.....	12
5.5 CENTRE FOR INFECTIONS	13
5.6 INFECTION CONTROL STAFF.....	13
6 REFERRALS	13
6.1 REFERENCE LABORATORY	13
7 ACKNOWLEDGEMENTS AND CONTACTS.....	14
REFERENCES.....	15

IDENTIFICATION OF ENTEROBACTERIACEAE

Issue no: 2 Issue date: 09.11.07 Issued by: Standards Unit, Evaluations and Standards Laboratory
Reference no: BSOP ID16i2

Page 3 of 16

This SOP should be used in conjunction with the series of other SOPs from the Health Protection Agency

www.evaluations-standards.org.uk

Email: standards@hpa.org.uk

AMENDMENT PROCEDURE

Controlled document reference	BSOP ID 16
Controlled document title	Identification of Enterobacteriaceae

Each National Standard Method has an individual record of amendments. The current amendments are listed on this page. The amendment history is available from standards@hpa.org.uk.

On issue of revised or new pages each controlled document should be updated by the copyholder in the laboratory.

Amendment Number/ Date	Issue no. Discarded	Insert Issue no.	Page	Section(s) involved	Amendment
2/ 09.11.07	1.1	2	1	Front Page	Northern Ireland logo added
			11	Flow chart	Title changed and flowchart put in to Visio format. Contents of flow chart updated.
			13	6 Referrals	Links to reference laboratory user manuals inserted.
			15	References	References reviewed and updated
			All	All	PDF links inserted to cross- reference NSM documents

IDENTIFICATION OF ENTEROBACTERIACEAE

Issue no: 2 Issue date: 09.11.07 Issued by: Standards Unit, Evaluations and Standards Laboratory
Reference no: BSOP ID16i2

Page 4 of 16

This SOP should be used in conjunction with the series of other SOPs from the Health Protection Agency

www.evaluations-standards.org.uk

Email: standards@hpa.org.uk

IDENTIFICATION OF ENTEROBACTERIACEAE

SCOPE OF DOCUMENT

This National Standards Method (NSM) describes the identification of members of the family Enterobacteriaceae. There are a large number of species included in the family. In routine clinical microbiology laboratories it is usual to attempt identification by use of biochemical tests. The level of identification depends on the site of infection, the immune status of the host and the need for epidemiological surveillance.

Because of the large number of species involved, this NSM will concentrate on the most common genera and species isolated from clinical specimens. The identification of Enterobacteriaceae can be simplified by taking advantage of the fact that three species comprise 80 to 95% of all isolates in the clinical setting. These are *Escherichia coli*, *Klebsiella pneumoniae* and *Proteus mirabilis*². The other species can be easily identified using biochemical tests.

INTRODUCTION

Taxonomy

The nomenclature of the Enterobacteriaceae is complicated and has been based on biochemical and antigenic characteristics². Recently, the application of new technologies such as DNA hybridisation has resulted in numerous changes in classification of the Enterobacteriaceae. In 1972 there were 26 recognised species, now there are in excess of 170.

Characteristics of Enterobacteriaceae

Members of the Enterobacteriaceae are Gram-negative, straight rods, some of which are motile. Most species grow well at 37°C, although some species grow better at 25 - 30°C. They are facultatively anaerobic, oxidase-negative and catalase-positive (except *Shigella dysenteriae* type 1). They are distributed worldwide and may be found in soil, water, plants and animals.

Common genera of the family Enterobacteriaceae

Citrobacter species

There are eleven species of which nine have been recovered from clinical material. They may be found in the faeces of humans and animals as part of the normal flora and grow readily on ordinary media. Colonies are generally smooth and moist although mucoid or rough strains occur. Some strains of *Citrobacter* resemble *Salmonella* species biochemically and agglutinate with *Salmonella* polyvalent antisera, which may lead to misidentification.

Enterobacter species

There are eleven species, but only eight have been isolated from clinical material (see section 2). They grow readily on ordinary agar, ferment glucose with the production of acid and gas, and are motile by peritrichous flagella. Some strains with a K antigen possess a capsule.

Escherichia species

There are six species, of which four are known to cause human disease (see section 2). The most commonly isolated is *Escherichia coli*, which contains numerous serotypes, some of which are associated with specific diseases.

A number of strains of *E. coli* may produce enterotoxins or other virulence factors, including those associated with invasiveness. Some strains are capsulated with a K antigen.

For more information on the identification of *E. coli* O157 see [BSOPID 22 - Identification of Escherichia coli O157](#).

IDENTIFICATION OF ENTEROBACTERIACEAE

Issue no: 2 Issue date: 09.11.07 Issued by: Standards Unit, Evaluations and Standards Laboratory

Page 5 of 16

Reference no: BSOP ID16i2

This SOP should be used in conjunction with the series of other SOPs from the Health Protection Agency

www.evaluations-standards.org.uk

Email: standards@hpa.org.uk

Hafnia alvei

The genus *Hafnia* contains a single species, *H. alvei*. It grows readily on ordinary media and is generally motile. Motility is more pronounced at 30°C than 37°C³. *H. alvei* can resemble non-motile, salmonella biochemically and can agglutinate in polyvalent salmonella antisera.

***Klebsiella* species**

The genus *Klebsiella* contains five species and four subspecies. Four species, previously named *Klebsiella pneumoniae*, *Klebsiella ozaenae*, *Klebsiella rhinoscleromatis* and *Klebsiella aerogenes* are now classed as subspecies of *K. pneumoniae*. *K. pneumoniae* subspecies *aerogenes* is the most frequently isolated species. All grow readily on ordinary media, are non-motile and are capsulated.

Morganella morganii

The genus *Morganella* contains a single species, *Morganella morganii*, which is divided into two sub species. It is motile with peritrichous flagella, but some strains do not form flagella above 30°C. *M. morganii* can resemble non-motile, salmonella biochemically and can agglutinate in polyvalent salmonella antisera.

***Proteus* species**

There are four species of *Proteus*, of which three cause disease (see section 2). All strains are urease positive and motile. They may swarm on blood agar, producing concentric zones or an even film. They are resistant to polymyxin B and colistin. *Proteus* species can resemble non-motile salmonella biochemically and can agglutinate in polyvalent salmonella antisera.

***Providencia* species**

The genus *Providencia* was originally established for organisms similar to *Proteus* species that were urease negative. There are five species within the genus, of which three cause disease (see section 2). All are motile but do not swarm. They are resistant to polymyxin B and colistin.

***Salmonella* species**

Serotypes of *Salmonella* and *Arizona* are now considered to belong to two species – *Salmonella* Bongori, (formerly subspecies V) and *Salmonella* Enterica, which comprises six subspecies: I = *enterica*, II = *salamae*, IIIa = *arizonae*, IIIb = *diarizonae*, IV = *houtenae*, and VI = *indica*. Most serotypes are motile; all except *Salmonella* Typhi produce gas from glucose. Most produce hydrogen sulphide except *S. Typhi* and *Salmonella* Paratyphi A (which is a weak producer).

For more information on serotyping of *Salmonella* species, see [BSOPID 24 - Identification of Salmonella Species](#)

***Serratia* species**

The genus *Serratia* contains ten species (but only two are commonly isolated from clinical material) and two sub species. They are *Serratia liquefaciens* and *Serratia marcescens*, the latter often producing a red pigment when grown at 20°C. Most of the species are motile. Members of the genus characteristically produce three enzymes - lipase, DNase and gelatinase. They are also resistant to polymyxin B and colistin, and this resistance may be heterogeneous, leading to a target-zone appearance.

***Shigella* species**

There are four species, *Shigella dysenteriae*, *Shigella flexneri*, *Shigella boydii* and *Shigella sonnei*. All are non-motile. *Shigella* species are highly infective, particularly *S. dysenteriae*⁴.

For more information on the identification of *Shigella* species, see [BSOPID 20 - Identification of Shigella Species](#)

***Yersinia* species**

The genus *Yersinia* contains eleven species, three of which (*Yersinia pestis*, *Yersinia enterocolitica* and *Yersinia pseudotuberculosis*) are known pathogens of man and animals⁵. All members of the genus grow readily on ordinary media.

IDENTIFICATION OF ENTEROBACTERIACEAE

Y. pestis is not fastidious but, after incubation for 24 hours on blood agar, colonies are usually much smaller than those of other Enterobacteriaceae. *Y. pestis* is always non-motile. The other species are non-motile at 37°C but motile at 30°C.

For more information on the identification of *Yersinia* species see [BSOPID 21 - Identification of Yersinia Species from Faeces](#)

Other genera of the family Enterobacteriaceae⁶⁻⁹

Other genera of the family reported to have caused infection are listed in section 2.

Principles of identification

Colonial morphology, Gram's stain, oxidase and the use of several biochemical tests identify isolates from clinical material. Enteric pathogens such as *Salmonella* species should be identified biochemically and typed serologically. *Hafnia*, *Morganella* and *Proteus* species can resemble non-motile salmonella biochemically and can agglutinate in polyvalent salmonella antisera. Because of the diversity of biochemical activities, all the reactions of every species are not described in this NSM. Therefore only a few screening tests are included together with results for the more common genera and species.

If further identification or confirmation is required, isolates should be sent to the Reference Laboratory.

Careful consideration should be given to isolates that give an unusual identification.

TECHNICAL INFORMATION

N/A

IDENTIFICATION OF ENTEROBACTERIACEAE

Issue no: 2 Issue date: 09.11.07 Issued by: Standards Unit, Evaluations and Standards Laboratory

Page 7 of 16

Reference no: BSOP ID16i2

This SOP should be used in conjunction with the series of other SOPs from the Health Protection Agency

www.evaluations-standards.org.uk

Email: standards@hpa.org.uk

1 SAFETY CONSIDERATIONS¹⁰⁻²²

All *S. Typhi*, *S. Paratyphi A*, *B* and *C*, *S. dysenteriae* type 1, *E. coli* O157, *Salmonella sendai* and *Salmonella cholera-suis*, and *Yersinia pestis* are Hazard Group 3 organisms and suspected isolates must be handled in a containment level 3 room.

Refer to current guidance on the safe handling of all organisms documented in this NSM.

Laboratory procedures that give rise to infectious aerosols must be conducted in a microbiological safety cabinet.

Shigella species and *E. coli* O157 are highly infective, and as few as 10 organisms are required for an infective dose. They have been reported as a cause of laboratory acquired infection.

The above guidance should be supplemented with local COSHH and risk assessments.

Compliance with postal and transport regulations is essential.

2 TARGET ORGANISMS

Enterobacteriaceae reported to have caused human infections^{6,7,9}

<i>Cedecea</i>	<i>davisae, lapagei, neteri, sp 3, sp 5</i>
<i>Citrobacter</i>	<i>amalonaticus, braakii, farmeri, freundii, koseri, rodentium, sedlakii, werkmanii, youngae</i>
<i>Edwardsiella</i>	<i>hoshinae, ictaluri, tarda</i>
<i>Enterobacter</i>	<i>aerogenes, amnigenus, asburiae, cloacae, gergoviae, hormaechei, sakazakii, taylorae</i>
<i>Escherichia</i>	<i>coli, fergusonii, hermanii, vulneris</i>
<i>Ewingella</i>	<i>americana</i>
<i>Hafnia</i>	<i>alvei</i>
<i>Klebsiella</i>	<i>oxytoca, pneumoniae</i> subspecies <i>aerogenes, ozaenae, pneumoniae</i> , and <i>rhinoscleromatis</i>
<i>Kluyvera</i>	<i>ascorbata, cryocrescens, georgiana</i>
<i>Leclercia</i>	<i>adecarboxylata</i>
<i>Morganella</i>	<i>morganii</i>
<i>Pantoea</i>	<i>agglomerans, dispersa</i>
<i>Photobacterium</i>	<i>luminescens</i>
<i>Proteus</i>	<i>mirabilis, penneri, vulgaris</i>
<i>Providencia</i>	<i>alcalifaciens, rettgeri, stuartii</i>
<i>Rahnella</i>	<i>aquatilis</i>
<i>Salmonella</i>	<i>enterica</i> (>2000 serotypes)
<i>Serratia</i>	<i>fonticola, grimesii, liquefaciens, marcescens, odorifera, plymuthica, proteamaculans, rubidaea</i>
<i>Shigella</i>	<i>boydii, dysenteriae, flexneri, sonnei</i>
<i>Tatumella</i>	<i>ptyseos</i>
<i>Yersinia</i>	<i>aldovae, bercovieri, enterocolitica, intermedia, frederiksenii, kristensenii, mollaretti, pestis, pseudotuberculosis, rohdei</i>
<i>Yokenella</i>	<i>regensburgei</i>

Other genera and species of the Enterobacteriaceae may rarely be associated with human disease.

IDENTIFICATION OF ENTEROBACTERIACEAE

Issue no: 2 Issue date: 09.11.07 Issued by: Standards Unit, Evaluations and Standards Laboratory

Page 8 of 16

Reference no: BSOP ID16i2

This SOP should be used in conjunction with the series of other SOPs from the Health Protection Agency

www.evaluations-standards.org.uk

Email: standards@hpa.org.uk

3 IDENTIFICATION

3.1 MICROSCOPIC APPEARANCE

Gram stain (see [BSOPTP 39 - Staining Procedures](#))

Gram-negative rods, some may show bipolar staining (eg *Yersinia* species)

3.2 PRIMARY ISOLATION MEDIA

Blood agar (BA): 16 – 24 h incubation in 5 - 10% CO₂ at 35°C - 37°C

MacConkey (MAC) agar: 16 – 24 h incubation in air at 35°C - 37°C

Cystine-lactose-electrolyte deficient (CLED) agar with bromothymol blue (CLED B) or Andrade's indicator (CLED A): 16 – 24 h incubation in air at 35°C - 37°C

Selective enteric media, incubation in air at 35°C - 37°C for 16 – 24 h:

Desoxycholate citrate agar (DCA)

Xylose-lysine-desoxycholate agar (XLD)

Cefixime-tellurite-sorbitol-MacConkey (CT-SMAC) agar

Thiosulphate-citrate-bile salt (TCBS) agar

Cefsulodin-Irgasan (triclosan)-novobiocin (CIN) agar incubated in air at 32°C for 24 – 48 h

Chromogenic media incubated in air at 35°C - 37°C for 16 - 24 h

3.3 COLONIAL APPEARANCE

BA - Gram-negative rods 2 - 3 mm diameter, low, convex, grey, smooth or mucoid, may be haemolytic or swarming.

MAC - Gram-negative rods may appear pink (lactose fermenting) or colourless (lactose non-fermenting) size and shape vary with individual species.

CLED B - Gram-negative rods may appear yellow (lactose fermenting) or blue (lactose non-fermenting) size and shape vary with individual species.

CLED A - Gram-negative rods may appear pink (lactose fermenting) or green translucent (lactose non-fermenting) size and shape vary with individual species.

DCA - Gram-negative rods may appear pink (lactose fermenting) or colourless (lactose non-fermenting) and may have black centre (H₂S producers).

XLD - Gram-negative rods may appear yellow (xylose, lactose or sucrose fermenting) or pink (non-fermenting) and may have black centre (H₂S producers).

CT-SMAC - Gram-negative rods may appear pink (sorbitol-fermenting) or colourless (sorbitol non-fermenting).

TCBS - Gram-negative rods may appear yellow (sucrose fermenting) or blue-green (sucrose non-fermenting).

CIN - Gram-negative rods, colonies may have deep red centres (mannitol fermenting) surrounded by a translucent border giving the appearance of a 'bull's eye'.

NOTE: Colonies of *Yersinia* species may be smaller than those of other Enterobacteriaceae.

3.4 TEST PROCEDURES

Oxidase (see [BSOPTP 26 - Oxidase Test](#)) .

IDENTIFICATION OF ENTEROBACTERIACEAE

Issue no: 2 Issue date: 09.11.07 Issued by: Standards Unit, Evaluations and Standards Laboratory

Page 9 of 16

Reference no: BSOP ID16i2

This SOP should be used in conjunction with the series of other SOPs from the Health Protection Agency

www.evaluations-standards.org.uk

Email: standards@hpa.org.uk

All Enterobacteriaceae are oxidase-negative.
Lactose fermentation exhibits variable results depending on the genus and species.

3.5 FURTHER IDENTIFICATION

Commercial identification kit

Serotyping.

3.6 STORAGE AND REFERRAL

Save the pure isolate on a nutrient agar slope for referral to the Reference Laboratory.

IDENTIFICATION OF ENTEROBACTERIACEAE

Issue no: 2 Issue date: 09.11.07 Issued by: Standards Unit, Evaluations and Standards Laboratory
Reference no: BSOP ID16i2

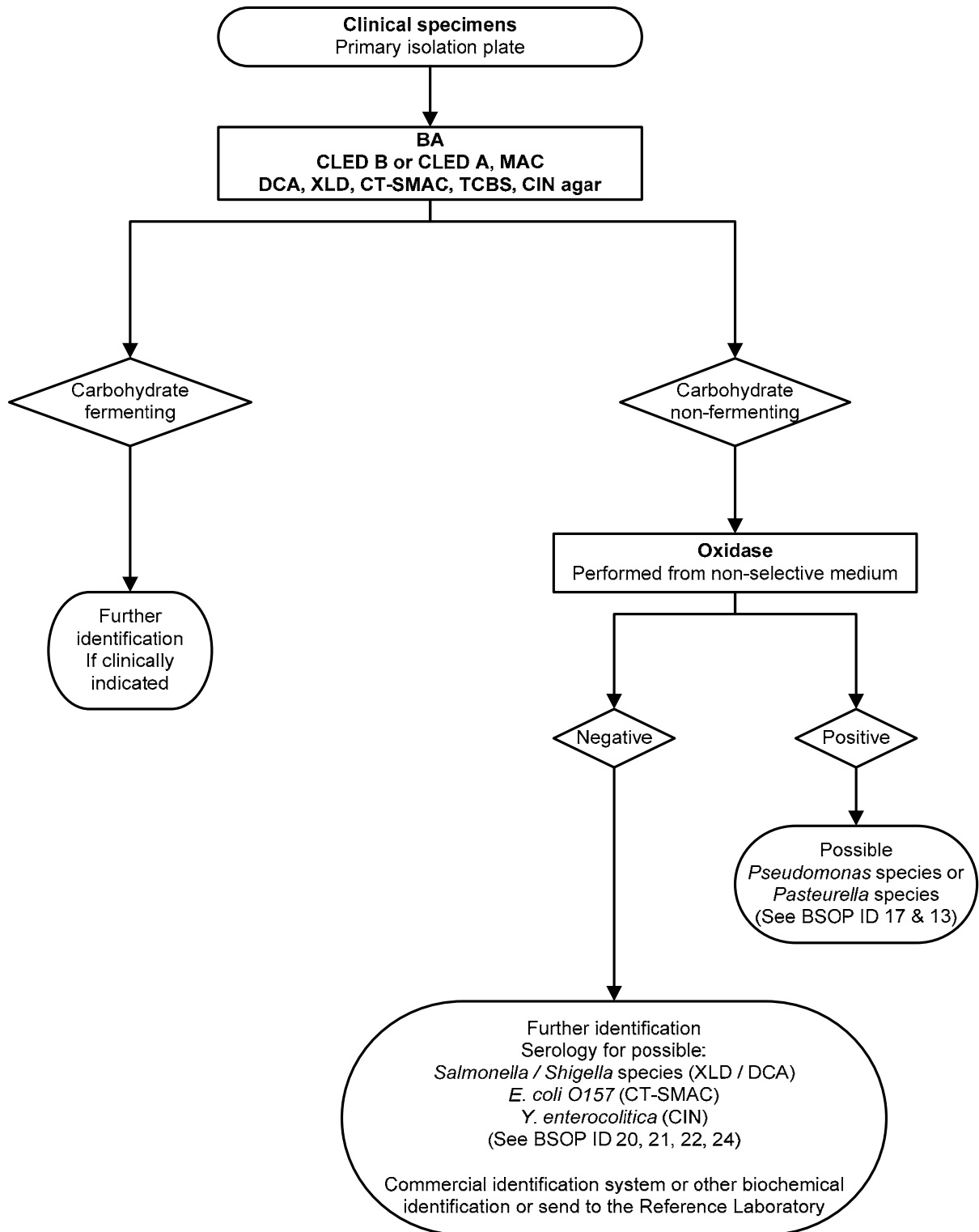
Page 10 of 16

This SOP should be used in conjunction with the series of other SOPs from the Health Protection Agency

www.evaluations-standards.org.uk

Email: standards@hpa.org.uk

4 IDENTIFICATION OF ENTEROBACTERIACEAE – FLOW CHART



The flowchart is for guidance only

IDENTIFICATION OF ENTEROBACTERIACEAE

Issue no: 2 Issue date: 09.11.07 Issued by: Standards Unit, Evaluations and Standards Laboratory
Reference no: BSOP ID16i2

Page 11 of 16

This SOP should be used in conjunction with the series of other SOPs from the Health Protection Agency

www.evaluations-standards.org.uk

Email: standards@hpa.org.uk

5 REPORTING

5.1 PRESUMPTIVE IDENTIFICATION

If appropriate growth characteristics, colonial appearance, Gram's stain of pure culture, oxidase and serological results are demonstrated.

5.2 CONFIRMATION OF IDENTIFICATION

Following commercial identification kit or other biochemical identification results or send to the Reference Laboratory.

5.3 MEDICAL MICROBIOLOGIST

Inform the medical microbiologist of presumptive and confirmed *Y. pestis*, *S. Typhi*, *S. Paratyphi*, *Shigella* species, *E. coli* O157 and *Salmonella* species (according to local procedures).

The medical microbiologist should also be informed if the request card bears information relating to infection with *Y. pestis* eg

- ulceroglandular/pneumonic syndrome
- septicaemia
- travelling, hunting, farming, or veterinary work overseas

Information relating to cases of:

- enterocolitis
- dysentery
- septicaemia
- haemolytic-uraemic syndrome
- neurological dysfunction or confusional states
- (non-blanching) rash

Presumptive or confirmed agents of enteric fever, dysentery, and enterocolitis should also be relayed to the medical microbiologist, especially if the patient has a history of:

- recent foreign travel
- farming (or visits to farms)
- veterinary or laboratory work
- alcoholism, substance abuse, immunodeficiency or other serious underlying disorder such as cancer

Presumptive and confirmed isolates of Enterobacteriaceae from cases of food poisoning and from investigations of outbreak situations should additionally be reported to the medical microbiologist

Follow local protocols for reporting to clinician.

5.4 CCDC

Refer to local Memorandum of Understanding.

IDENTIFICATION OF ENTEROBACTERIACEAE

5.5 CENTRE FOR INFECTIONS²³

Refer to current guidelines on CDSC and COSURV reporting.

5.6 INFECTION CONTROL STAFF

Inform the infection control team of presumptive and confirmed isolates of *E. coli* O157, *Yersinia*, *Salmonella* and *Shigella* species

6 REFERRALS

6.1 REFERENCE LABORATORY

For information on the tests offered, turn around times, transport procedure and the other requirements of the reference laboratory refer to: [http://www.hpa.org.uk/Centre for Infections/lep/default.htm](http://www.hpa.org.uk/Centre%20for%20Infections/lep/default.htm)

Laboratory of Enteric Pathogens
Centre for Infection
Health Protection Agency
61 Colindale Avenue
London
NW9 5HT

Contact Centre for Infections main switchboard: Tel. +44 (0) 20 8200 6173

IDENTIFICATION OF ENTEROBACTERIACEAE

Issue no: 2 Issue date: 09.11.07 Issued by: Standards Unit, Evaluations and Standards Laboratory
Reference no: BSOP ID16i2

Page 13 of 16

This SOP should be used in conjunction with the series of other SOPs from the Health Protection Agency

www.evaluations-standards.org.uk

Email: standards@hpa.org.uk

7 ACKNOWLEDGEMENTS AND CONTACTS

This National Standard Method has been developed, reviewed and revised by the National Standard Methods Working Group for Clinical Bacteriology (http://www.hpa-standardmethods.org.uk/wg_bacteriology.asp). The contributions of many individuals in clinical bacteriology laboratories and specialist organisations who have provided information and comment during the development of this document, and final editing by the Medical Editor are acknowledged.

The National Standard Methods are issued by Standards Unit, Evaluations and Standards Laboratory, Centre for Infections, Health Protection Agency London.
For further information please contact us at:

Standards Unit
Evaluations and Standards Laboratory
Centre for Infections
Health Protection Agency
Colindale
London
NW9 5EQ
E-mail: standards@hpa.org.uk

IDENTIFICATION OF ENTEROBACTERIACEAE

Issue no: 2 Issue date: 09.11.07 Issued by: Standards Unit, Evaluations and Standards Laboratory
Reference no: BSOP ID16i2

Page 14 of 16

This SOP should be used in conjunction with the series of other SOPs from the Health Protection Agency

www.evaluations-standards.org.uk

Email: standards@hpa.org.uk

REFERENCES

1. Department of Health NHS Executive: The Caldicott Committee. Report on the review of patient-identifiable information. London. December 1997.
2. Farmer JJ, III, Davis BR, Hickman-Brenner FW, McWhorter A, Huntley-Carter GP, Asbury MA, et al. Biochemical identification of new species and biogroups of Enterobacteriaceae isolated from clinical specimens. J Clin Microbiol 1985;21:46-76.
3. Gunthard H, Pennekamp A. Clinical significance of extraintestinal *Hafnia alvei* isolates from 61 patients and review of the literature. [Review] [26 refs]. Clinical Infectious Diseases 1996;22:1040-5.
4. Emmerson AM, Gillespie SH. *Shigella*. In: Emmerson AM, Hawkey PM, Gillespie SH, editors. Principles and Practice of Clinical Bacteriology. Chichester: John Wiley & Sons; 1997. p. 389-98.
5. Gray LD. *Escherichia*, *Salmonella*, *Shigella* and *Yersinia*. In: Murray PR, Baron EJ, Pfaller MA, Tenover FC, Tenover RH, editors. Manual of Clinical Microbiology. 6th ed. Washington D.C.: American Society for Microbiology; 1995. p. 450-6.
6. Holt JG, Krieg N R, Sneath P H A, Staley J T, Williams S T, editors. Bergey's Manual of Determinative Bacteriology. 9th ed. Baltimore: Williams and Wilkins; 1994. p. 175-222
7. Temesgen Z, Toal DR, Cockerill FR, III. *Leclercia adecarboxylata* infections: case report and review.[comment]. [Review] [11 refs]. Clinical Infectious Diseases 1997;25:79-81.
8. Izard D, Gavini F, Trinel PA, Leclere H. [*Rahnella aquatilis*, a new member of the Enterobacteriaceae (author's transl)]. [French]. Annales de Microbiologie 1979;130:163-77.
9. Abbott SL, Janda JM. Isolation of *Yokenella regensburgei* ("*Koserella trabulsii*") from a patient with transient bacteremia and from a patient with a septic knee. Journal of Clinical Microbiology 1994;32:2854-5.
10. Advisory Committee on Dangerous Pathogens. 2004 Approved List of Biological Agents. <http://www.hse.gov.uk/pubns/misc208.pdf>. p. 1-17.
11. Public Health Laboratory Service Standing Advisory Committee on Laboratory Safety. Safety Precautions: Notes for Guidance. 4th ed. London: Public Health Laboratory Service (PHLS); 1993.
12. Control of Substances Hazardous to Health Regulations 2002. General COSHH. Approved Code of Practice and Guidance, L5. Suffolk: HSE Books; 2002.
13. Health and Safety Executive. 5 steps to risk assessment: a step by step guide to a safer and healthier workplace, IND (G) 163 (REVL). Suffolk: HSE Books; 2002.
14. Health and Safety Executive. A guide to risk assessment requirements: common provisions in health and safety law, IND (G) 218 (L). Suffolk: HSE Books; 2002.
15. Health Services Advisory Committee. Safety in Health Service Laboratories. Safe working and the prevention of infection in clinical laboratories and similar facilities. 2nd ed. Suffolk: HSE Books; 2003.
16. NHS Estates. Health Building Note 15. Facilities for pathology services. 2nd ed. London: The Stationary Office; 2005.
17. BS EN 12469: 2000. Biotechnology - performance criteria for microbiological safety cabinets. London: British Standards Institution (BSI); 2000.

IDENTIFICATION OF ENTEROBACTERIACEAE

Issue no: 2 Issue date: 09.11.07 Issued by: Standards Unit, Evaluations and Standards Laboratory

Page 15 of 16

Reference no: BSOP ID16i2

This SOP should be used in conjunction with the series of other SOPs from the Health Protection Agency

www.evaluations-standards.org.uk

Email: standards@hpa.org.uk

18. BS 5726: 1992. Microbiological safety cabinets. Part 2. Recommendations for information to be exchanged between purchaser, vendor and installer and recommendations for installation. London: British Standards Institution (BSI); 1992.
19. BS 5726: 1992. Microbiological safety cabinets. Part 4. Recommendations for selection, use and maintenance. London: British Standards Institution (BSI); 1992.
20. Advisory Committee on Dangerous Pathogens. The management, design and operation of microbiological containment laboratories. Suffolk: HSE Books; 2001.
21. Burnens AP, Zbinden R, Kaempf L, Heinzer I, Nicolet J. A case of laboratory acquired infection with *Escherichia coli* O157:H7. *Zentralblatt fur Bakteriologie* 1993;279:512-7.
22. Griffin PM, Tauxe RV. The epidemiology of infections caused by *Escherichia coli* O157:H7, other enterohemorrhagic *E. coli*, and the associated hemolytic uremic syndrome. [Review] [226 refs]. *Epidemiologic Reviews* 1991;13:60-98.
23. Health Protection Agency. Laboratory Reporting to the Health Protection Agency. Guide for diagnostic laboratories. February. 2007.

IDENTIFICATION OF ENTEROBACTERIACEAE

Issue no: 2 Issue date: 09.11.07 Issued by: Standards Unit, Evaluations and Standards Laboratory
Reference no: BSOP ID16i2

Page 16 of 16

This SOP should be used in conjunction with the series of other SOPs from the Health Protection Agency

www.evaluations-standards.org.uk

Email: standards@hpa.org.uk